

RICE KING

Foliar Fertiliser Part One **1**

What it Provides to the Plant

It contains a high level of nitrogen plus all minor and major critical elements in an acidic pH of 2.8. It is a beneficially low pH solution, and the high level nitrogen supports increased root growth during vegetative phase.

High levels of nitrogen and phosphorus are particularly important for establishing strong and healthy plants, and **Rice King Foliar Part 1** is focused on providing these elements directly to the plant through the leaf. Bypassing the soil hurdles at this early stage strengthens the developing root system. Importantly, **Rice King Foliar Part 1** includes Molybdenum to assist with nitrogen utilisation, which is critical during crop establishment.

Why this is Important

Science demonstrates that the use of nitrogen, phosphorus and sulphur as an early foliar application, supported by appropriate trace elements, leads to demand for cation uptake by the root. This stimulates the citric acid passive and active exudation that feeds bacteria as it builds more humus within the root rhizosphere. This early physiological process delivers added benefits in crop health and nutrition. By stimulating rhizosphere activity, it unlocks the phosphorus and trace elements in the soil. This in turn increases nutrient uptake by the root to drive canopy growth.

The citrate component of **Rice King Foliar Part 1** benefits the crop in cold season as a source of energy, whilst it's translocation in phloem tissue to the root acts as an added force for root exudation and unlocking soil-based phosphorus and trace elements.

Early Growth Fertiliser High in **P** and **N**

Rice King Foliar Fertiliser is a High-analysis Broad-Spectrum Solution (HBS) that applies nutrient delivery technology to deliver its nutrient package through the leaf. It is highly concentrated and contains the optimum amount and balance of nutrients especially for rice, delivered in a unique two-stage application process. Because of this **Rice King Foliar** fertiliser endows the plant with the ability to guard against soil nutrient variability and deficiency and ensures greater plant protection, increased growth and improved yield qualities.

Rice King Foliar is a world first for rice and brings many crop advantages.

Nutrient Delivery System

Rice King Foliar fertiliser overcomes the nutrient deficiency problems associated with soil and paddock variability. It is contained in an advanced nutrient delivery system (NDS) developed specifically for this purpose. This technology enables the safe transfer of nutrients through the leaf and into the plant cell walls. This increases nutrient delivery significantly. It's formulation gives stability and maintains the integrity of the plant without any risk of element antagonism.

Focused source of nitrogen and phosphorus for rapid growth and plant development.

Balanced trace elements required to support plant establishment.

With a pH of 2.8 this product uses RLF's NDS (Nutrient Delivery System) technology to deliver a high-analysis, broad spectrum product safely to the plant. Uptake efficiency is substantially increased.



RLF



Australian-owned Formulator, Manufacturer and Supplier of High-analysis Broad-spectrum Liquid Fertiliser technologies. For over 25 years RLF's products have been used by millions of farmers and growers world-wide.

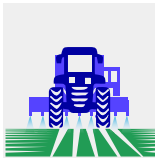
ISO 9001 Quality Assured Company since 1998.



METHODS OF APPLICATION



Manual Application



Machine Application

ANALYSIS



- Nitrogen (N)
- Phosphorus (P₂O₅)
- Potassium (K₂O)
- Magnesium (Mg)
- Sulphur (S)
- Zinc (Zn)
- Manganese (Mn)
- Copper (Cu)
- Molybdenum (Mo)



Member Login

Please login to be able to view this detail

Not a member yet?
[Register Here](#)

[LOG IN](#)

Dilution Rates

Foliar Applied

10 to 20 litres of water per litre of the product is the optimum dilution range for Rice KING Foliar 1 and Rice KING Foliar 2. Always use more water per hectare in dry conditions to benefit from the hydraulic events happening in plant and soil.

| Crop Type | Application Rate | Recommended Timings | | | | | | | | | | | | | |
|--|--------------------|--|---|---|---|---|---|---|---|---|----|----|----|----|----------|
| | | weeks 1 | 2 | 3 | 4 | 5 | 6 | 7 | 8 | 9 | 10 | 11 | 12 | 13 | 14 weeks |
| 1 L of Rice KING Foliar Part 1 and 1L of Rice KING Foliar Part 2 per tonne of expected yield/h | | <div style="display: flex; justify-content: space-between;"> Two Leaf Three Leaf Tillering Branching Elongation / Jointing Root / Tuber Bulking Pre Flowering Flowering Grain Set Grain Fill Ripening Stage </div> | | | | | | | | | | | | | |
| Rice | 1-5 Litres/hectare | | | | | | | | | | | | | | |
| Corn/Maize | 1-5 Litres/hectare | | | | | | | | | | | | | | |
| Wheat, Barley, and Oats | 1-5 Litres/hectare | | | | | | | | | | | | | | |
| Vegetables | 1-5 Litres/hectare | | | | | | | | | | | | | | |
| Grapes | 1-5 Litres/hectare | | | | | | | | | | | | | | |
| Tubers | 1-5 Litres/hectare | | | | | | | | | | | | | | |
| Lettuce and Brassicas | 1-5 Litres/hectare | | | | | | | | | | | | | | |
| Canola and Oil Crops | 1-5 Litres/hectare | | | | | | | | | | | | | | |
| Legumes | 1-5 Litres/hectare | | | | | | | | | | | | | | |
| Sorghum and Millets | 1-5 Litres/hectare | | | | | | | | | | | | | | |

Part 1 - Vegetative Stage

Apply 1-litre **Rice KING Foliar Part 1** per 1 tonne of expected grain/ha during vegetative crop phase.

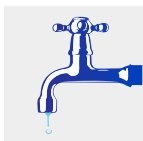
Part 2 - Reproductive Stage

Followed by 1-litre of **Rice KING Foliar Part 2** per 1 tonne of expected grain/ha during reproductive phase, or as late as practical following application of **Rice KING Foliar Part 1**.

HOW TO MIX



Shake Vigorously



Mix with Water



Mix with other Chemicals



Product Compatibility + Jar Testing

DO NOT mix with alkaline copper fungicides or inoculants. If you are unsure, we recommend a simple jar test of products. Mix together and check if reaction occurs.

See:

www.rlfchemtest.com

Precautions

Non-toxic product. Avoid unneeded contact. Keep out of the reach of children. If contact is made with eyes, immediately rinse with plenty of water. If swallowed, seek medical attention.